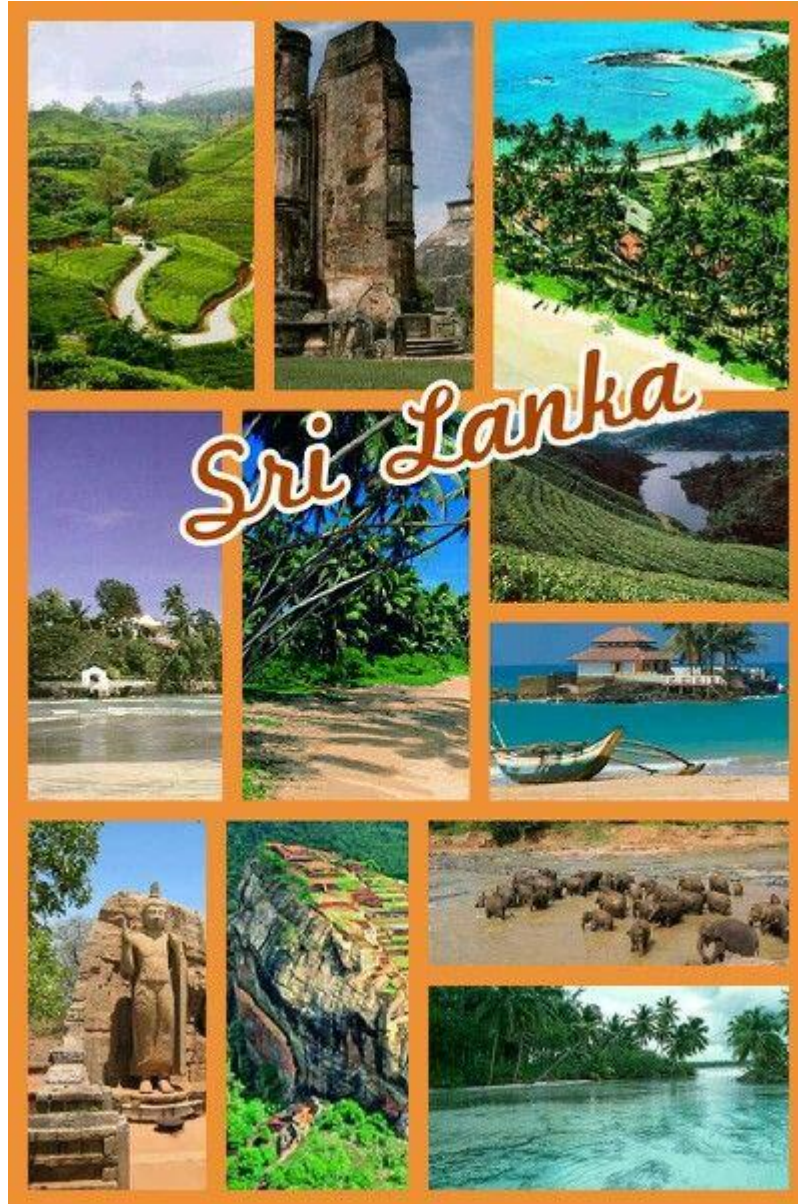


## EESENCE OF SRI LANKA

06 nights / 07 days



### Xplore Destination

Office No. 23, Ground Floor, A Wing, Agarwal Trade Centre, Plot No. 62, Sector No. 11, CBD Belapur, Navi Mumbai - 400614.

Contact +91 7666774650 / 9167712216 Email - [travel@xploredestination.com](mailto:travel@xploredestination.com) / [holidays@xploredestination.com](mailto:holidays@xploredestination.com)

## DAY-WISE ITINERARY:

### Day 1

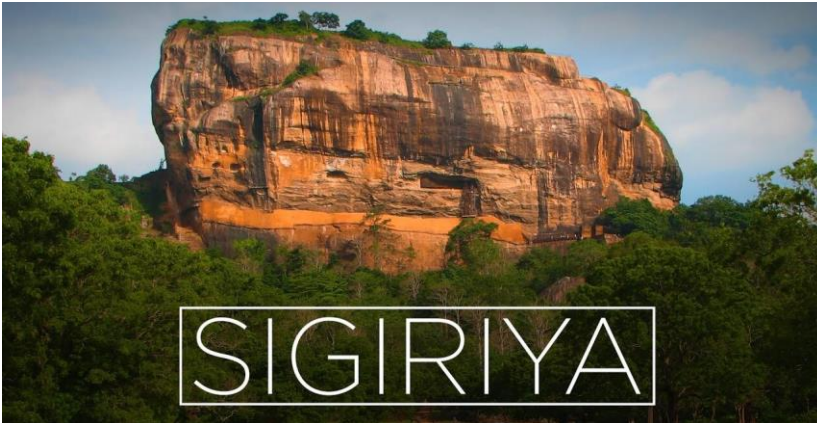
On arrive in Sri Lanka, you will be welcomed and assisted by our representative and you will be then transferred to your hotel in Sigiriya via Pinnawala.



En route visit, Pinnawala Elephant Orphanage - Approx 55 miles from Colombo, off the Colombo - Kandy road is Pinnawala, where an orphanage was started in 1975 to house the abandoned and the wounded elephants. The number of elephants has increased to more than 65 now; including Baby Elephants brought from various parts, as well as the 23 baby elephants born as a result of the captive breeding program. The best time to visit is the feeding time from 0930-1000 hrs and 1330-1400 hrs and the bathing time from 1000-1030 hrs and 1400-1430 hrs when all the elephants are taken to the river close by. We would then visit Dambulla Cave Temple and the rest of the day could be spent at your leisure.

Dambulla Cave Temple (also known as the Golden Temple of Dambulla) is a World Heritage Site (1991) in Sri Lanka situated in the central part of the country. This site is situated 148 km east of Colombo and 72 km north of Kandy. It is the largest and best preserved cave temple complex in Sri Lanka. The rock towers 160 m over the surrounding plains. There are more than 80 documented Caves in the surrounding area. These paintings and statues are related to Lord Buddha and his life. There are total of 153 Buddha statues, 3 statues of Sri Lankan kings and 4 statues of gods and goddesses. The murals cover an area of 2,100 square meters. Depictions on the walls of the caves include the temptation by the demon Mara and Buddha's first sermon.

### Day 2:



Breakfast at the hotel, Thereafter visit Sigiriya Rock Fortress, Sigiriya is a UNESCO World Heritage Site and the 5<sup>th</sup> Century Fortress in the Sky which is perhaps the most fantastic single wonder of the Island. It is also known as Lion Rock because of the huge lion that used to stand at the entrance to the Palace on the summit of the 600-foot high rock. On its summit are the foundations of the Royal Palace, Water Tanks to supply water and all other buildings and at the edges the guardhouses. On one of the stairways the only known ancient work of

Sinhala secular painting survived in the form of Frescoes of 21 life sized damsels still shining in their original colours. The Water Gardens, Fountain Garden, Summerhouses, Boulder Gardens and the Caves within the enclosed area should not be missed.

Thereafter check out from the hotel & proceed to the hill capital of Kandy. En route we will visit the spice gardens in Matale.

Spice Gardens at Matale ☑ You will see many spice gardens at Matale and in Mawanella on the Colombo-Kandy road where Cinnamon, Cardamom, Pepper Creepers and all other spice trees, plants and creepers are planted for visitors to see them. Spice products are also available for those who would like to buy them. At all Spice Gardens visitors are taken round explaining each tree and plant and at the end explaining the use of them food preparations.

### Xplore Destination

Office No. 23, Ground Floor, A Wing, Agarwal Trade Centre, Plot No. 62, Sector No. 11, CBD Belapur, Navi Mumbai - 400614.

Contact +91 7666774650 / 9167712216 Email - travel@xploredestination.com / holidays@xploredestination.com



Afterwards visit a Batik Factory where you can see the manufacture of beautiful Batik prints. These shops contain a wide variety of Batik items. Proceed to Kandy & check into hotel.

### Day 3:

Commence sightseeing in Kandy, Kandy is The hill capital is another World Heritage Sites. It was the last stronghold of the Sinhalese Kings during the Portuguese, Dutch and British rule and finally lost to the British in 1815 after an agreement. To the Buddhist of Sri Lanka and the World, Kandy is one of the most sacred sites as it is the home of the Dalada Maligawa - Temple of the Sacred Tooth Relic of Lord Buddha. The Bathing Pavilion (Ulpenge) is by the Lake and in the Center of the lake is the Island called Kiri samudraya (Milk white ocean) used by the kings as the summer house. Today it is the center of Buddhism, Arts, Crafts, Dancing, Music and Culture.



Royal Botanical Gardens - Started in 1374 as a pleasure garden of the Kings of Gampola and Kandy. There are more than 5,000 species of trees, plants and creepers. Some rare and endemic as well as flora from the tropical world are found in the gardens. Spice Garden and Orchid House are popular with tourists. There are 5 Palm Avenues beautifying the gardens, the earliest and tallest Palm Avenue (Royal Palm Avenue) was planted in 1905 and the Double Coconuts from the Seashells Island, with the largest seed of all plants in the world are one such avenue.

Visit Gem museum & Gem shop

In the evening visit,

Temple of the Sacred Tooth Relic - ever since 4th Century A.D, when the Buddha's Tooth was brought to Sri Lanka hidden from sacrilegious hands in an Orissan princess's hair, the Relic has grown in repute and holiness in Sri Lanka and throughout the Buddhist world. It is considered Sri Lanka's most prized possession. Thereafter you could witness a cultural performance by various Sri Lankan dancers and musicians.

### Day 4:



After breakfast proceed to Nuwaraeliya. Tea Factory. The tea factories found on most tea estates play a vital role in the final value of the manufactured tea. Regardless of how carefully the leaf has been grown and plucked, if the processes at the factory are not carried out properly the end result will be of a poor quality. A tea factory is a multi-storied building, almost always sited on the tea estates to ensure that the time between plucking and processing tea is kept to a minimum. Once the tea leaves arrive at the factory they are spread across the upper floors of the building in troughs a process known as withering. Withering

removes all excess moisture in the leaf to make it pliable.

Commence of sightseeing of Nuwaraeliya,

Nuwaraeliya - The Little England of Sri Lanka, is set against beautiful backdrops of Mountains, Valleys, Waterfalls and Tea Plantations. It is supposed to be one of the coolest places in the Island, but it is really just like an English spring day, although the temperature does drop at night. All around Nuwara Eliya you will see evidence of the British influence, houses like country cottages or Queen Ann style mansions. The Victoria Park, in the middle of the town, is a lovely place for a stroll or a picnic. Seasons may be absent elsewhere in Sri Lanka, but here you can read them by the flowers, which bloom in the spring (March to May) and the fall (August and September). These are the seasons when low-country folk flock to Nuwara Eliya to escape the sea level heat and humidity.

Visit Sita Amman temple

### Xplore Destination

Office No. 23, Ground Floor, A Wing, Agarwal Trade Centre, Plot No. 62, Sector No. 11, CBD Belapur, Navi Mumbai - 400614.

Contact +91 7666774650 / 9167712216 Email - travel@xploredestination.com / holidays@xploredestination.com

According to the Indian Epic Ramayanaya legend, the area where Sita, Queen of King Rama was kept in hiding and the area she roamed is in the hill country of Sri Lanka. In Nuwara Eliya is the "Sita Amman Kovil" - a quaint little temple, with the statues of Rama, Sita, Hanuman, Lakshmana and Sugriva. This is supposed to be the only Kovil in the entire World dedicated to Sita. The stream by the side of the Temple is a famous spot where she went for bathing. Two caves in the Strict Nature Reserve of Hakgala, starting from Temple land are supposed to be two of three Palaces Sita was kept in hiding. Overnight stay at hotel.

### Day 5

After breakfast check out from the hotel & transfer to Bentota.

En route optional stop over at Kithulgala for white water rafting,



#### Kitulgala

It is one of the most famous places for White Water Rafting adventures. However there are many more reasons why this spot, just 100kms from the capital Colombo, is well worth visiting. Chief among these are the historic Beli Lena Caves where the pre-historic Balangoda Man supposed to have lived. The caves are reached after a short 10km drive from the main road through the Kitulgala tea estate.

David Lean's epic war film "Bridge on the River Kwai" was filmed in this area of the Kelani River, which runs through Kitulgala, and the ruins of the bridge still remains. In the Kelani Valley forest reserve is a low elevation forest where you get to see rare and endemic birds, including the latest Serendib scops Owl

(Otus thilo Hoffmani), amphibians, reptiles, frogs, endemic fishes in the stream, endemic tree snails & if lucky mammals including mousedeer, monkeys and other small animals. Traveling to & from the forest can be done by boat. While at Belilena caves you get to witness the sight where the prehistoric man has lived 20000 years ago. The evidence done on the excavations at the sight have produced proof of 03 skeletons remains, food remains, micro & macro litchis and animal bone implements were found scattered among the large number of snail shells found in the caves. For those who are interested fresh water fishing can be done near the retreat. The river has the largest game fish found in Sri Lanka called the Mahseer (Barbus Tor), and fresh water shark (Wallagonia Attu) or the Murell or Loola.

Thereafter proceed to Bentota & Check into the hotel.

Leisure at Bentota beach.

#### BENTOTA



Facing the Indian Ocean, a tropical lagoon and a major river Bentota offers water Sports possibilities nowhere else to be found. Apart from swimming, body-surfing or diving in the sea, you can jet-ski, windsurf, parasail or enjoy a romantic river safari on the river and lagoon. Safe swimming conditions combined with fun water sport and exciting excursions are providing for the ideal background for a relaxed holiday in Sri Lanka. Being one of the most established beach resorts in Sri Lanka, Bentota is known for its professional touristic infrastructure.

Visit Turtle Farm

Where you can see several species of turtles, specially the hawksbill, are endangered. Most vulnerable of all are their eggs, which are left uncovered on beaches all around the coast. The good will of Kosgoda area fishermen, who brings these eggs gratis to the hatchery, has led to the hatching and release of 100,000 young turtles in only two years since the hatchery opened. An endowment by the Hasselblad Estate was responsible for the establishment of this hatchery.

### Xplore Destination

Office No. 23, Ground Floor, A Wing, Agarwal Trade Centre, Plot No. 62, Sector No. 11, CBD Belapur, Navi Mumbai - 400614.

Contact +91 7666774650 / 9167712216 Email - travel@xploredestination.com / holidays@xploredestination.com





XPLORE DESTINATION

**Xplore the world with us..  
Let's book the vacation of your dreams!**



Evening water sports activities

## Day 6

Breakfast at the hotel.



Thereafter checkout from the hotel & transfer to Colombo.

In the afternoon commence city tour of the commercial capital of Sri Lanka.

Colombo is the business and commercial center and the new capital is Sri Jayawardhanapura Kotte, which is only a few miles away. The remains of the buildings during the period and the Portuguese, Dutch and British rule are found in every area of the city.

None of the Portuguese & Dutch fortifications are found today but some of their buildings and churches could be seen in the Fort & Pettah areas. Visit Fort, the former British administrative

center and military garrison, Sea Street - the old smith's quarters in the heart of Pettah, the Bazaar area where there is also a Hindu Temple with elaborate stone carvings, the Kaymans Gate with the Belfry at the original gate to enter the Fort, the Dutch Church of Wolfendhaal dating back to 1749, Davatagaha Mosque. Also visit the BMICH (Bandaranaike Memorial International Conference Hall), see the replica of Avukana Buddha and the Independence Square.

Colombo shopping: Colombo is an intriguing city with something for everyone, a place constantly changing, reinventing itself and moving forward as well as keeping some of its old luster. One thing is for sure, you can never get bored in Colombo with so much to see and do. Those in search of some serious shopping will certainly enjoy Colombo. Definitely the best shopping in Sri Lanka, Colombo offers everything from bustling outdoor markets to modern, air conditioned shopping malls, and from street vendors to specialty boutiques. And not just that, you will find the prices almost as good as the variety of items on sale. Overnight stay in Colombo.

## DAY 7: COLOMBO - DEPARTURE

Your Holiday concludes today. Breakfast at hotel. Time free until check out. **Xplore Destination** thanking you for your patronage.

Transfer to **Colombo airport** by Speedboat / Sea Plane for your flight back home! Return with unforgettable memories of your holiday!

**Take Away Sweet Memories...!!**

**Xplore Destination**

Office No. 23, Ground Floor, A Wing, Agarwal Trade Centre, Plot No. 62, Sector No. 11, CBD Belapur, Navi Mumbai - 400614.

Contact +91 7666774650 / 9167712216 Email - travel@xploredestination.com / holidays@xploredestination.com